

**ANSI/AAMA/NWDA 101/I.S.2-97
TEST REPORT**

Rendered to:

EARTHWISE GROUP LLC

**SERIES/MODEL: MV 550 Monument PW NC / RW PW
PRODUCT TYPE: Fixed Window**

Title	Summary of Results
Rating	F-C50 72 x 60
Air Infiltration	0.01 cfm/ft ²
Water Resistance Test Pressure	12.00 psf
Uniform Load Deflection Test Pressure	±50.0 psf
Uniform Load Structural Test Pressure	±75.0 psf

Reference should be made to ATI Report No. 57180.02-701-47 for complete test specimen description and data.

ANSI/AAMA/NWDA 101/I.S.2-97 TEST REPORT

Rendered to:

EARTHWISE GROUP LLC
107 Pierce Road
Clifton Park, New York 12065

Report No.: 57180.02-701-47
Test Date: 04/11/05
Report Date: 05/04/05
Expiration Date: 04/11/09

Project Summary: Architectural Testing, Inc. (ATI) was contracted by Deceuninck North America, LLC to witness testing on a Deceuninck Series/Model 310.000, fixed window at Deceuninck North America, LLC test facility in Monroe, Ohio. The sample tested successfully met the performance requirements for a F-C50 72 x 60 rating. This report is a reissue of the original Report No. 57180.01-701-47. This report is reissued in the name of Earthwise Group LLC through written authorization of Deceuninck North America, LLC. Test specimen description and results are reported herein.

Test Specification: The test specimen was evaluated in accordance with ANSI/AAMA/NWDA 101/I.S.2-97, *Voluntary Specifications for Aluminum, Vinyl (PVC) and Wood Windows and Glass Doors*.

Test Specimen Description:

Series/Model: MV 550 Monument PW NC / RW PW

Product Type: Fixed Window

Overall Size: 6' 0" wide by 5' 0" high

Fixed Daylight Opening Size: 5' 7" wide by 4' 7-1/4" high

Overall Area: 30 ft²

Finish: All white PVC

Glazing Details: Nominal 3/4" insulating glass fabricated from 3/16" sheets of clear annealed glass with a metal spacer system. The glass was set from the interior against double-sided adhesive glazing tape and secured with interior snap-in PVC glazing beads.

Test Specimen Description: (Continued)

Weatherstripping: None

Frame Construction: The frame was constructed of extruded PVC members with mitered and welded corners.

Drainage:

<u>Description</u>	<u>Quantity</u>	<u>Location</u>
0.88" by 0.13" weepslot with cover	2	One at each end of exterior sill face
1.00" by 0.13" weepslot	2	One at each corner of sill glazing track

Reinforcement: None

Installation: Test sample was installed into a 2x10 #2 Southern pine wood buck with #8 x 5/8" steel screws through the nailing fin, spaced every 6" and 1" from each corner (50 total). Exterior perimeter was sealed with silicone.

Test Results:

The results are tabulated as follows:

<u>Paragraph</u>	<u>Title of Test - Test Method</u>	<u>Results</u>	<u>Allowed</u>
2.1.2	Air Infiltration per ASTM E 283 1.57 psf (25 mph)	0.01 cfm/ft ²	0.30 cfm/ft ² max.

Note #1: *The tested specimen meets (or exceeds) the performance levels specified in ANSI/AAMA/NWDA 101/I.S.2-97 for air infiltration.*

2.1.3	Water Resistance per ASTM E 547 (without screen)		See Note #2
2.1.4.1	Uniform Load Deflection per ASTM E 330		See Note #2
2.1.4.2	Uniform Load Structural per ASTM E 330		See Note #2

Note #2: *The client opted to start at a pressure higher than the minimum required. Those results are listed under "Optional Performance".*

Test Results: (Continued)

<u>Paragraph</u>	<u>Title of Test - Test Method</u>	<u>Results</u>	<u>Allowed</u>
2.1.7	Welded Corner Test	Meets as stated	Meets as stated
2.1.8	Forced Entry Resistance per ASTM F 588		
	Type: D	Grade: 10	
	Hand and Tool Manipulation Test	No entry	No entry

Optional Performance

4.3	Water Resistance per ASTM E 547 (without screen) 12.0 psf	No leakage	No leakage
4.4.1	Uniform Load Deflection per ASTM E 330 (Loads were held for 52 seconds) 50.0 psf (positive) 50.0 psf (negative)	0.00" 0.00"	See Note #3 See Note #3

Note #3: *The Uniform Load Deflection test is not a requirement of ANSI/AAMA/NWWDA 101/I.S.2-97 for this product designation. The deflection data is recorded in this report for special code compliance and information only.*

4.4.2	Uniform Load Structural per ASTM E 330 (Loads were held for 10 seconds) 75.0 psf (positive) 75.0 psf (negative)	0.00" 0.00"	0.288" 0.288"
-------	--	----------------	------------------

Note: *A lead check swab test was performed on all polymeric profiles. The test result was negative for the presence of lead (Pb).*

This report is reissued in the name of Earthwise Group LLC through written authorization of Deceuninck North America, LLC to whom the original report was rendered. The original Deceuninck North America, LLC Report No. is 57180.01-701-47.

Detailed drawings, representative samples of the test specimen, and a copy of this report will be retained by ATI for a period of four years from the original test date. The above results were secured by using the designated test methods and they indicate compliance with the performance requirements of the above referenced specification. This report does not constitute certification of this product, which may only be granted by the certification program administrator. This report may not be reproduced, except in full, without the approval of Architectural Testing, Inc.

For ARCHITECTURAL TESTING, INC:

Stephen D. Shank
Project Manager

Michael L. Mackereth
Director - Operations

SDS:vlm

Attachments (pages):

Appendix-A: Drawings (4)

Revision Log

<u>Rev. #</u>	<u>Date</u>	<u>Page(s)</u>	<u>Revision(s)</u>
0	05/04/05	N/A	Original report issue - Reissued Report No. 57180.01-701-47 in the name of Earthwise Group LLC.

Appendix A

Drawings

310000 PW FRAME - BILL OF MATERIALS

ITEM NO.	DESCRIPTION	QUANTITY	PART NO.	FAB DWG. NO	SOURCE
1	HEAD ✓	1	10003170	10471-0	A
2	SILL ✓	1	10003170	10472-0	A
3	JAMB ✓	2	10003170	10473-0	A
4	HORIZONTAL GLAZING BEAD ✓	2	10003190	STRAIGHT CUT OR 45	A
5	VERTICAL GLAZING BEAD ✓	2	10003190	STRAIGHT CUT OR 45	A
6					
7	INSULATED GLASS UNIT (3/4")	1			R
8	GLAZING COMPOUND	AS REQ'D	SBC2150		T
9	SETTING BLOCKS (refer to IG Supplier Guidelines)	2	1/8" x 3/4"		W
10					
11	WEEP COVER	2	97-03-00-00		D, RRR
12					
13					
14					
15					
16					
17					
18					
19					
20					
21					
22					
23					
24					
25					
26					
27					

Rev	Date	Description	By

Note:
* Only required for DP50

DAYTON TECHNOLOGIES	
MONROE, OH	COPYRIGHT 2004
NAME:	310000 PICTURE WINDOW
DWN BY:	CRB 5/31/2004
CHKD BY:	
DWG NO:	310000PW.xls

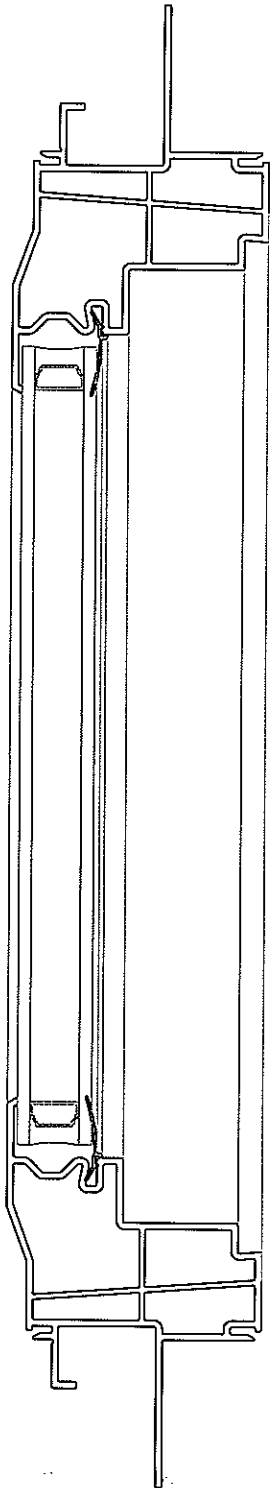


Test sample complies with these details.
Deviations are noted.

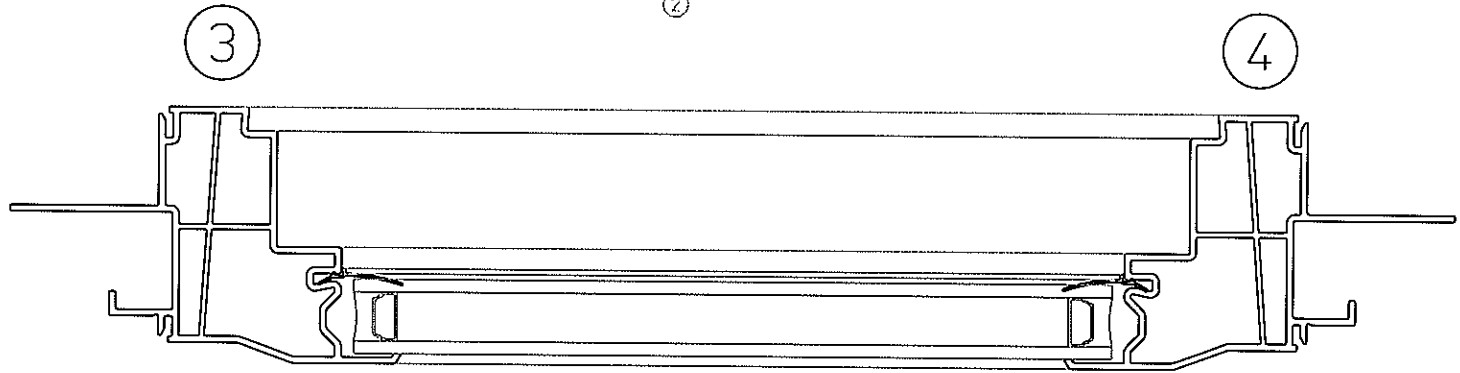
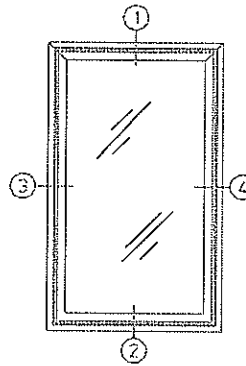
Report# 57180.01
Date 4/11/05 Tech SDS

CAD MAINTAINED. CHANGES SHALL BE INCORPORATED BY THE DESIGN ACTIVITY.

REV STATUS		REVISION HISTORY			
REV	SH	REV.	DESCRIPTION	DATE	APPROVED
-	-	<input checked="" type="checkbox"/>	---	YR/MO/DAY	---
-	-				
-	-				



1



Architectural Testing

Test sample complies with these details.
Deviations are noted.

Report# 57180.01-701-47

Date 4/14/05 Tech SDS

2

THIS DOCUMENT CONTAINS PROPRIETARY INFORMATION. DO NOT COPY OR DISCLOSE THIS INFORMATION WITHOUT THE EXPRESS WRITTEN CONSENT OF DAYTON TECHNOLOGIES. DAYTON TECHNOLOGIES RESERVES THE RIGHT TO CHANGE THIS DRAWING AND ANY ASSOCIATED DOCUMENTS.

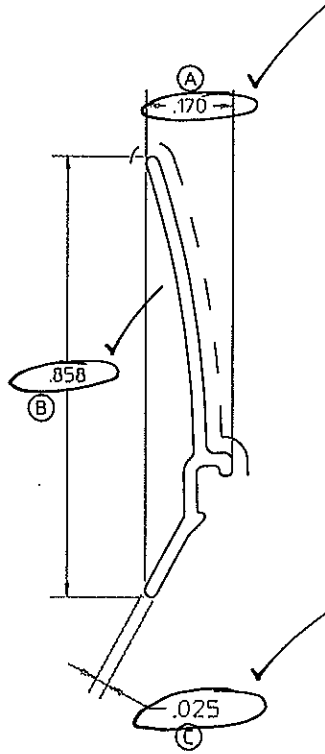
UNLESS OTHERWISE SPECIFIED DIM ARE IN INCHES TOL ON ANGLE ± 1° 2 PL: ± .01 3 PL: ± .005 INTERPRET DIM AND TOL PER ASME Y14.5M - 1994 THIRD ANGLE PROJECTION	DESIGN BY: HTC			<small>DAYTON TECHNOLOGIES</small> <small>DAYTON, OHIO 45424</small>
	DATE: 02/02/11			
	DRAWN BY: HTC	NAME:	310.000 PICTURE WINDOW	
	DATE: 04/02/11	DWG. NO: 310000PW	SCALE: 1 : 1 (LBS/FT)	SHEET: 1 OF 1

UNLESS OTHERWISE NOTED THE FOLLOWING TOLERANCES APPLY

.001 - .100	± .005	1.001 - 1.500	± .020
.101 - .500	± .010	1.501 - 2.000	± .025
.501 - 1.000	± .015	2.001 - & UP	± .030

(UNSPECIFIED ANGLES ± 1° - WOODGRAIN SURFACES ADD .007)

— ■ EXPOSED SURFACE — ■ WOODGRAIN SURFACE



Architectural Testing

Test sample complies with these details.
Deviations are noted.

Report# 57180.01

Date 4/11/05 Tech SDS

ACTUAL SIZE:



REV.	DATE	DESCRIPTION	BY
[A]	01/22/02	REMOVED ORIGINAL B, C & D MODIFIED A, RENAMED F & E	MTC
[B]	08/26/02	A MIN WAS .150 B MAX WAS .878 C MAX WAS .030	MTC

FITS NOTE		N/A
BOW CLASS:	C	IMPACT AREA: NOTED

CONTROL DIMENSIONS

DIM	METH	MIN	ENG	MAX	DIM	METH	MIN	ENG	MAX
A	OC	.145	.170	.190	X	--			
B	OC	.838	.858	.890	Y	--			
C	OC	.020	.025	.036	Z	--			
D	--				AA	--			
E	--				BB	--			
F	--				CC	--			
G	--				DD	--			
H	--				EE	--			
I	--				FF	--			
J	--				GG	--			
K	--				HH	--			
L	--				II	--			
M	--				JJ	--			
N	--				KK	--			
O	--				LL	--			
P	--				MM	--			
Q	--				NN	--			
R	--				OO	--			
S	--				PP	--			
T	--				QQ	--			
U	--				RR	--			
V	--				SS	--			
W	--				TT	--			

Part Wt. (Lbs/Ft)	Rigid:	Cap:	Flex:	Alum:	Total
	.015	----	----	----	.015

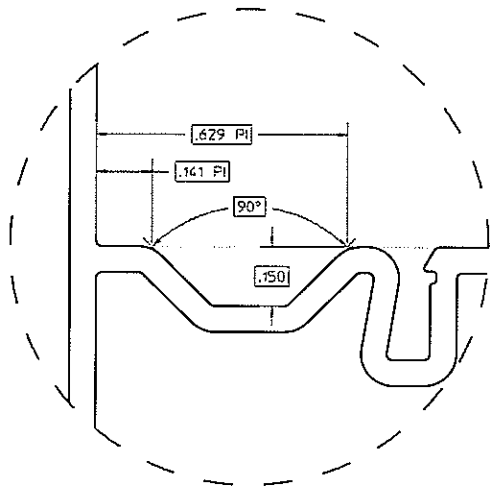
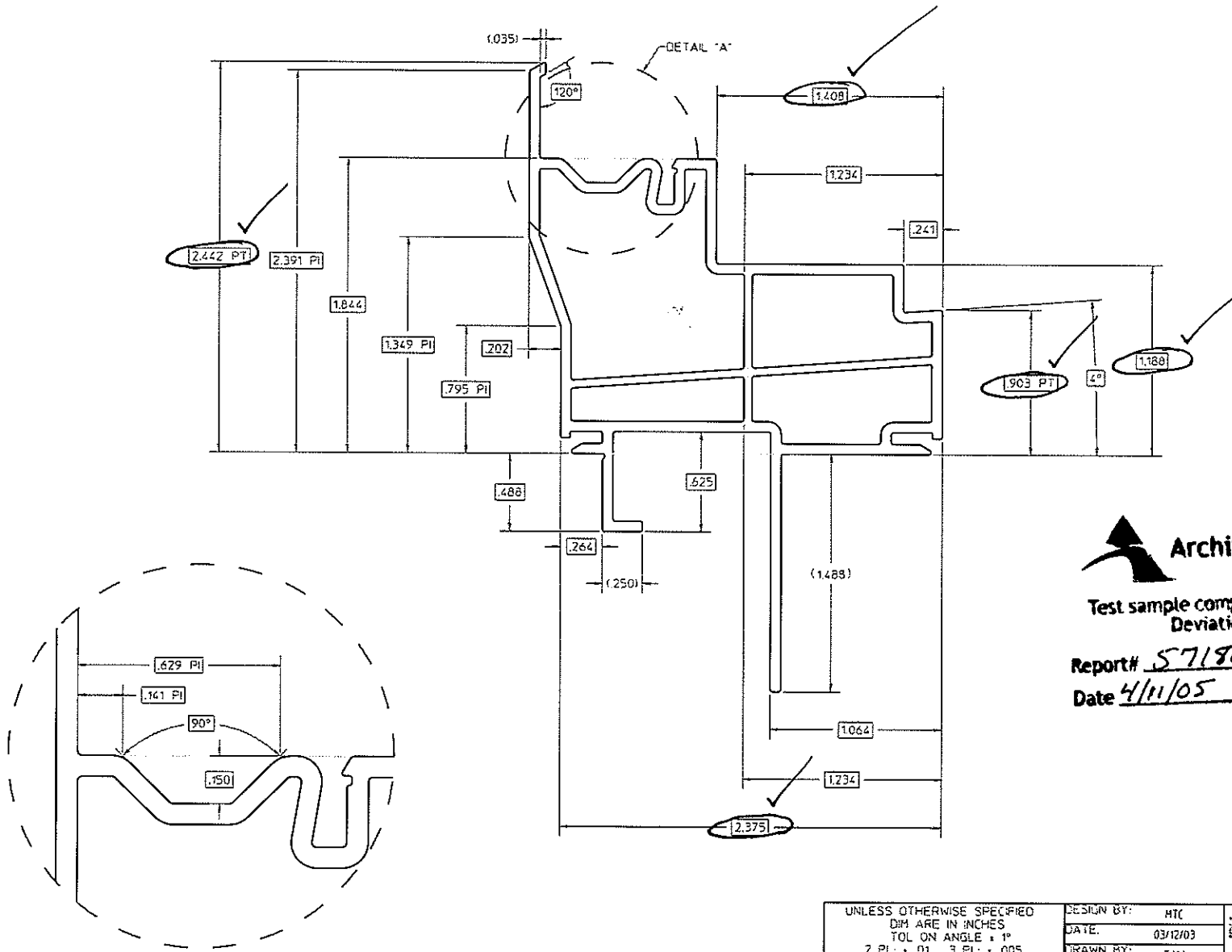
DAYTON TECHNOLOGIES

A MEMBER OF THE DECEUNINCK GROUP

MONROE, OHIO

Copyright 2001

NAME: GLAZING BEAD	
DRAWN BY: TJH	DATE: 11/20/01
CHECKED BY:	DATE:
SCALE: 5 : 1 "B"	COLOR: ENH DWS RED GREY BATH
CUST. PART NO: 10003190	PART DWS NO: 10003190-B



DETAIL "A"
SCALE: 4 : 1

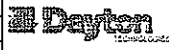




Test sample complies with these details.
Deviations are noted.

Report# 57180.01

Date 4/11/05 Tech SDS

THIS DOCUMENT CONTAINS PROPRIETARY INFORMATION. DO NOT COPY OR DISCLOSE THIS INFORMATION WITHOUT THE EXPRESS WRITTEN CONSENT OF DAYTON TECHNOLOGIES. DAYTON TECHNOLOGIES RESERVES THE RIGHT TO CHANGE THIS DRAWING AND ANY ASSOCIATED DOCUMENTS.

UNLESS OTHERWISE SPECIFIED DIM ARE IN INCHES TOL ON ANGLE ± 1° 2 PL: ± .01 3 PL: ± .005 INTERPRET DIM AND TOL PER ASME Y14.5M - 1994	DESIGN BY: MTC	  <small>COPYRIGHT 2004 251 NORTH GARDNER ROAD MARIETTA, OHIO 45750</small>	DATE: 03/12/03
	THIRD ANGLE PROJECTION		DRAWN BY: TAW
	FILENAME: Hpd/cad/parts/3170/ 10003170_SH3.rvt	NAME: HEAD FRAME - SH	
		DWG. NO: 10003170_SH3	REV: -
	SCALE: 2 : 1 (LBS/FT)	N/A	SHEET: 3